


Aluminum Door Panel Trim Dented by Seat Belt Latchplate

Service Category Vehicle Interior

Section Interior Panels/Trim

Market USA

Lexus Supports
ASE Certification 

Applicability

YEAR(S)	MODEL(S)	ADDITIONAL INFORMATION
2013 – 2014	GS350	

Introduction

Some 2013 – 2014 model year GS 350 vehicles may exhibit a condition where the door trim becomes dented during normal use (such as contact with the seat belt latchplate tang during retraction). The Front Door Trim Ornament has been updated to address this condition.

Production Change Information

This bulletin applies to vehicles produced **BEFORE** the Production Change Effective VINs shown below.

MODEL	DRIVETRAIN	PRODUCTION CHANGE EFFECTIVE VIN
GS 350	AWD	JTHCE1BL#E5026419
	2WD	JTHBE1BL#E5039616

Warranty Information

OP CODE	DESCRIPTION	TIME	OFF	T1	T2
BD1419	R & R Ornament, FR, Door Trim, Panel (One Side)	0.8	67781-30390-B0 67782-30370-B0	67	13
Combo A	Opposite Side	0.6			

APPLICABLE WARRANTY

- This repair is covered under the Lexus Basic Warranty. This warranty is in effect for 48 months or 50,000 miles, whichever occurs first, from the vehicle's in-service date.
- Warranty application is limited to occurrence of the specified condition described in this bulletin.

Aluminum Door Panel Trim Dented by Seat Belt Latchplate

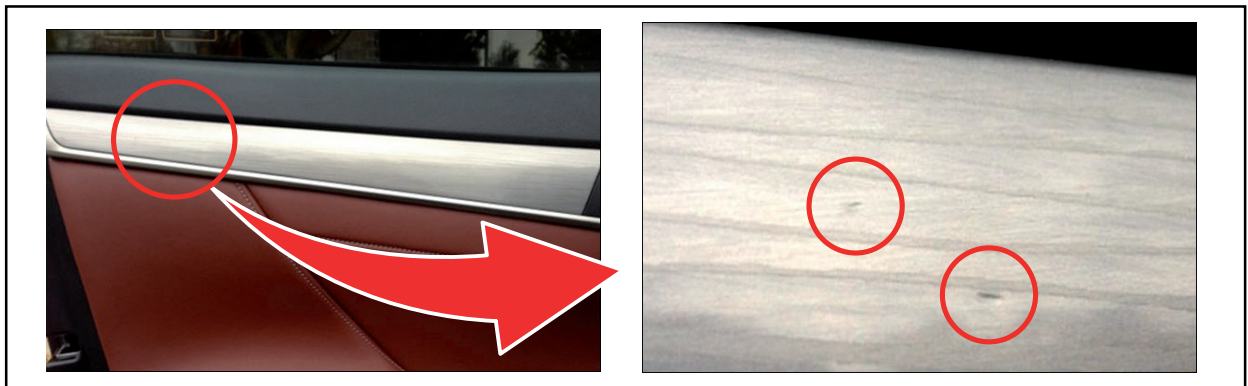
Parts Information

PART NUMBER	PART NAME	QTY
67781-30390-B0	Ornament, FR, Door Trim, RH	1
67782-30370-B0	Ornament, FR, Door Trim, LH	1

Repair Procedure

1. Confirm the condition as described in the Introduction.

Figure 1.



2. Remove and replace the Front Door Trim Ornament.

Refer to the Technical Information System (TIS), applicable model and model year Repair Manual:

- 2013 GS 350:
Vehicle Exterior – Door/Hatch – “Door/Hatch: Front Door: [Disassembly](#) / [Reassembly](#)”
- 2014 GS 350:
Vehicle Exterior – Door/Hatch – “Door/Hatch: Front Door: [Disassembly](#) / [Reassembly](#)”