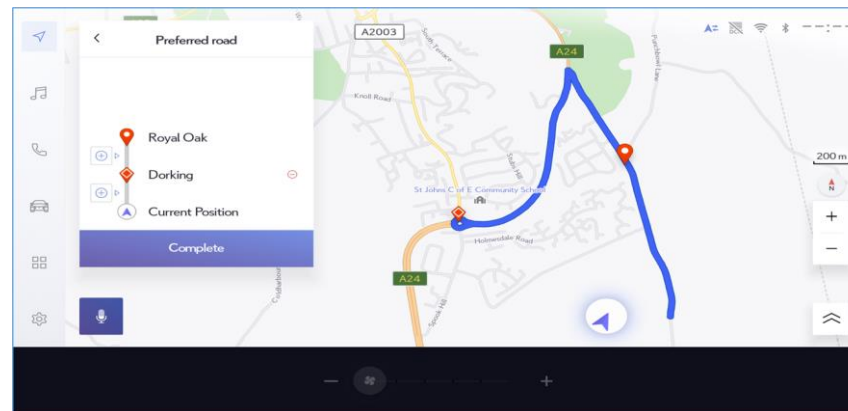


# LEXUS LINK (Pro) MAP Update Journey



# Required material

- A Lexus car with Lexus Link (Pro) MultiMedia system.
- A laptop and an USB key.



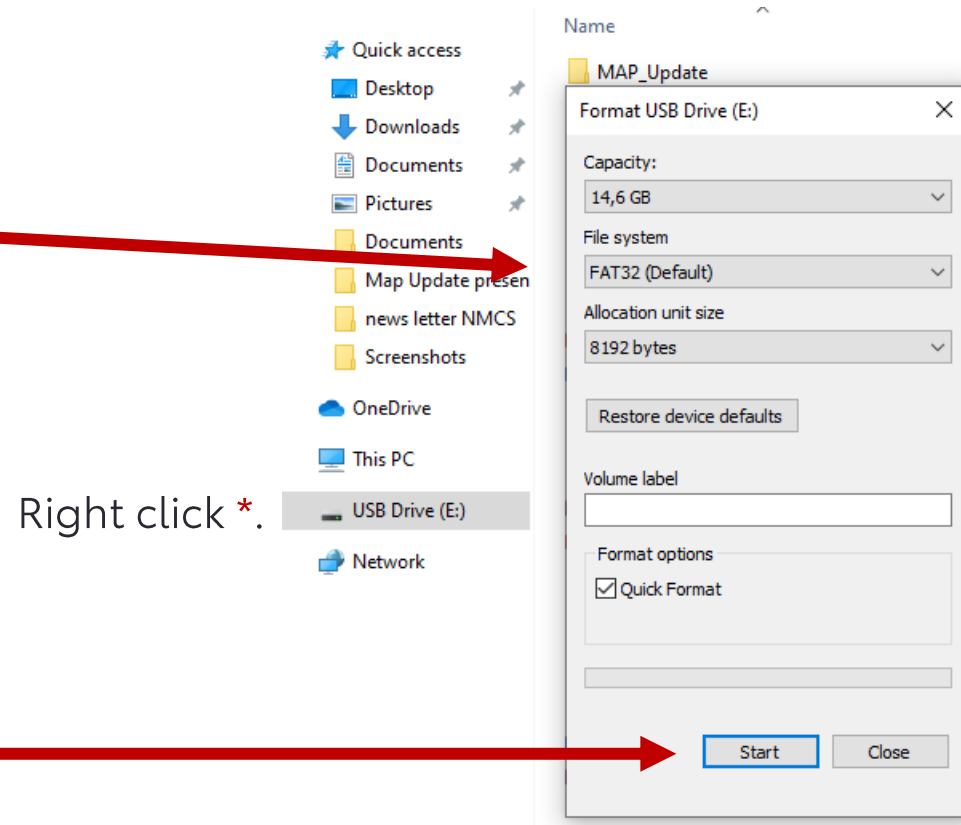
Advice on the USB key

- It is advisable use an empty USB key.
- USB key must have a storage capacity of at least 32GB.
- USB key must be formatted to FAT32.

- In the Following slide the guide to correct format the USB key and how to manage a ZIP folder are shown.

# How to format the USB key:

1. Connect the USB key you want to format to your computer.
2. Wait for it to be detected and for the operating system to install it correctly.
3. Go to my computer and find the key among the available connected devices.
4. Right click on the device and then choose format\*.
5. Set the "FAT32" formatting type.



6. Press the start button

# Get License key and download package

ACTIVE

▲ LEXUS LINK PRO CZXXAAAETA - ( 2/8/2023 - 12/30/2099 )



LEXUS LINK PRO

DeviceID:CZXXAAAETA

License Key:79662191

nil

▼ Terms of use

DOWNLOAD TO  
USB



Note down  
8 digit  
License key



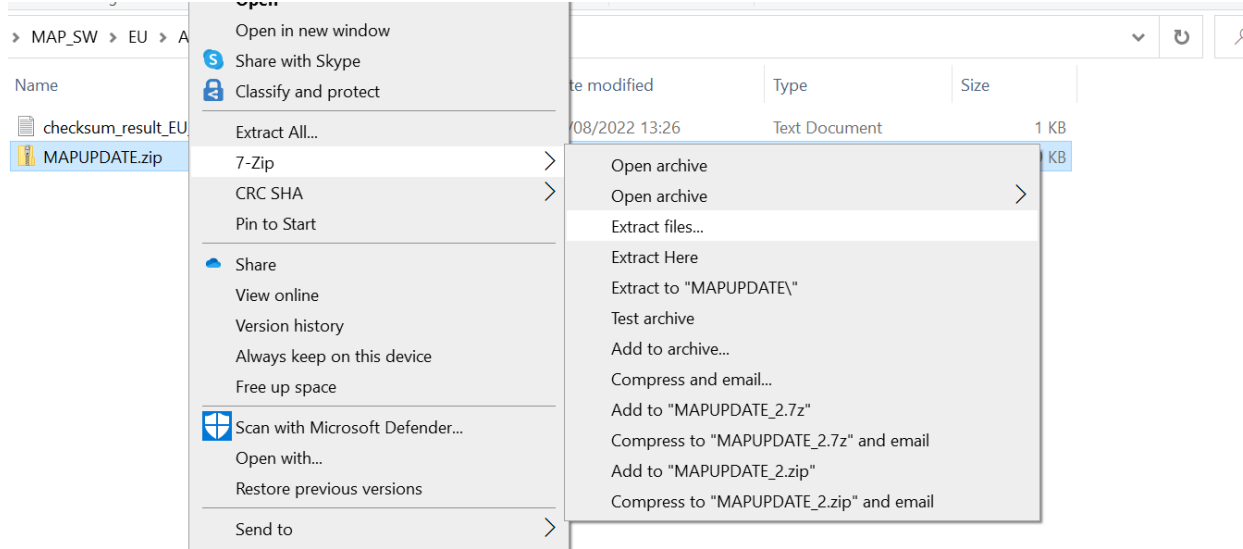
Download  
Map  
Package



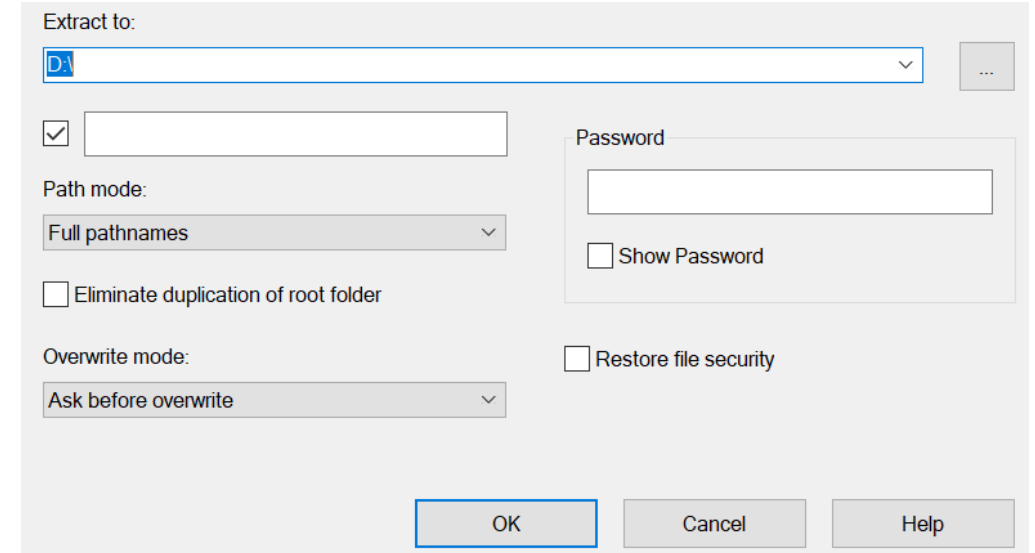
Select **Lexus LINK (L1) / Lexus LINK Pro (L2)**  
depending on your unit

# Place unzipped data in USB key

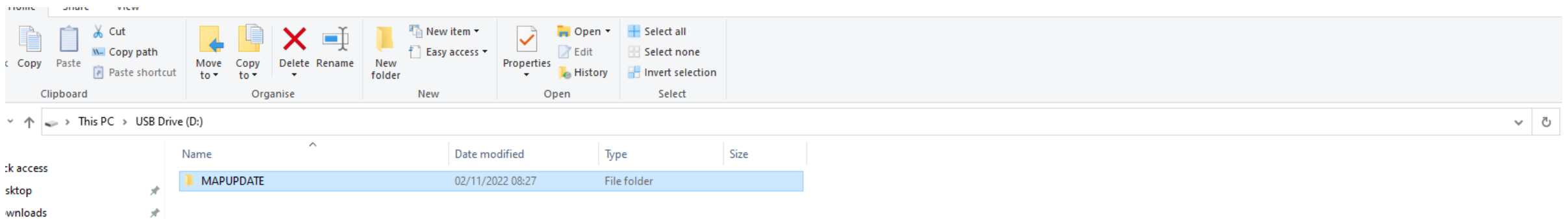
1. Proceed to unzip map update package. Press "Extract files..."



2. Select USB key in which you want to unzip the file

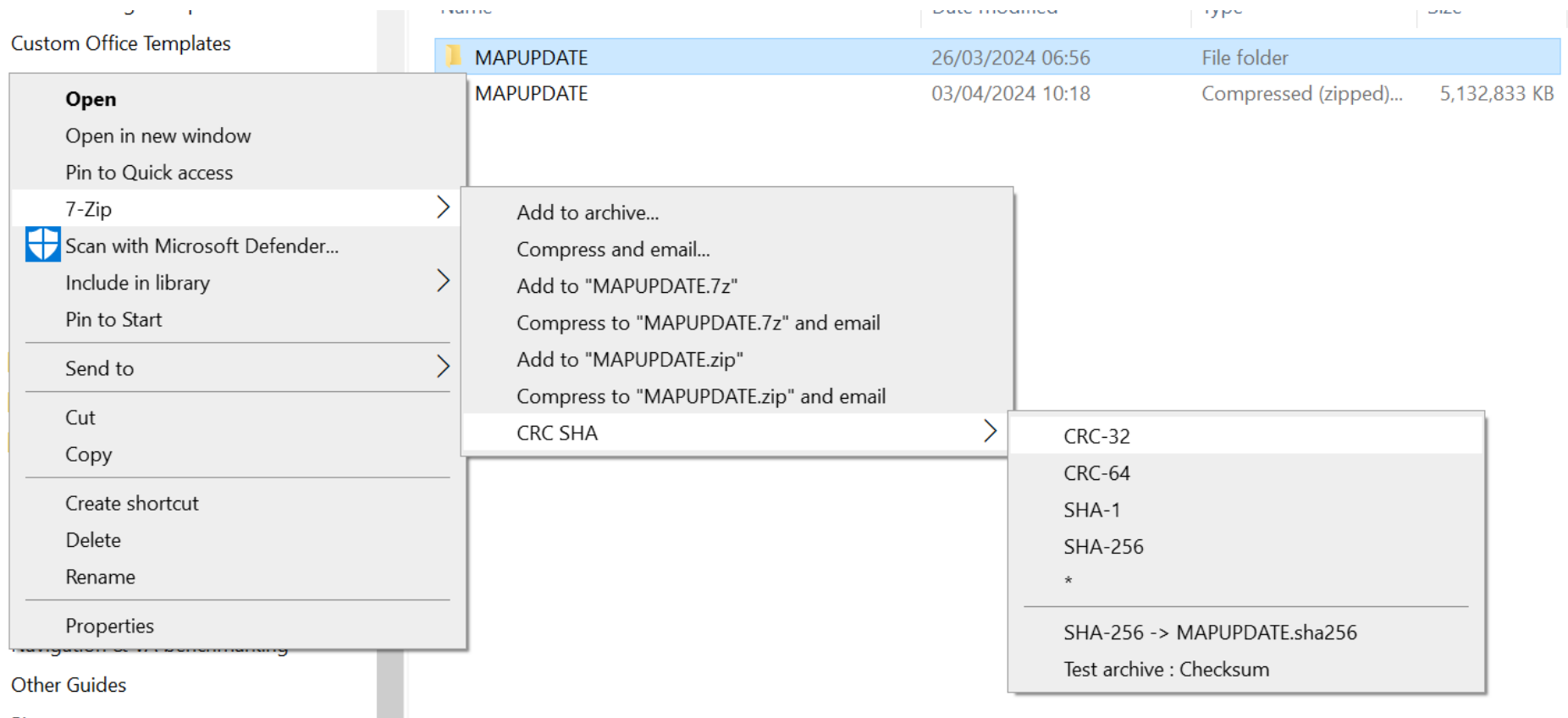


3. Root of USB key MUST be like this:



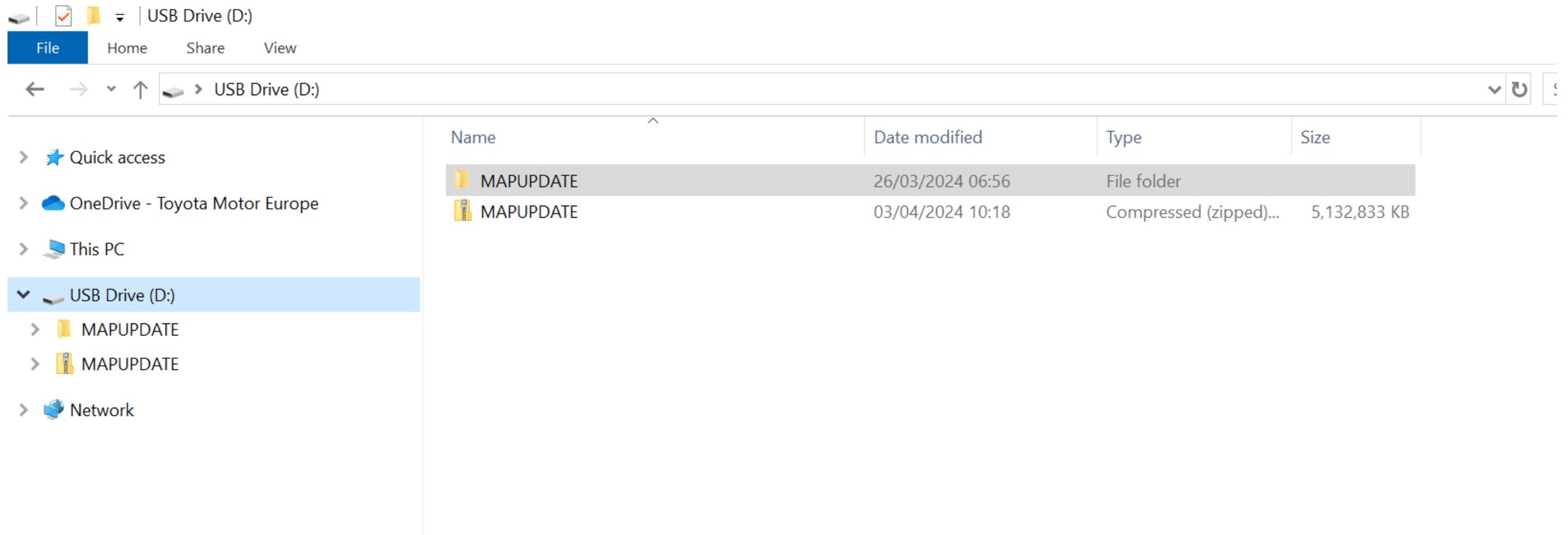
# Intro 0.1: Checksum context

Checksum is used as a tool to validate that the map database package downloaded and extracted in our USB is correct. In this Guide, we show how to perform this check using the program 7-zip, as well as how to confirm if our map update package contains the correct data.



## Intro 0.2: Initial requirements

To perform the Checksum, you will need to have your USB plugged in your computer, with the only content on it being the Map Update package folder extracted (unzipped)



USB Drive (D:)

File Home Share View

← → ▾ ↑ USB Drive (D:) ▾ ↻

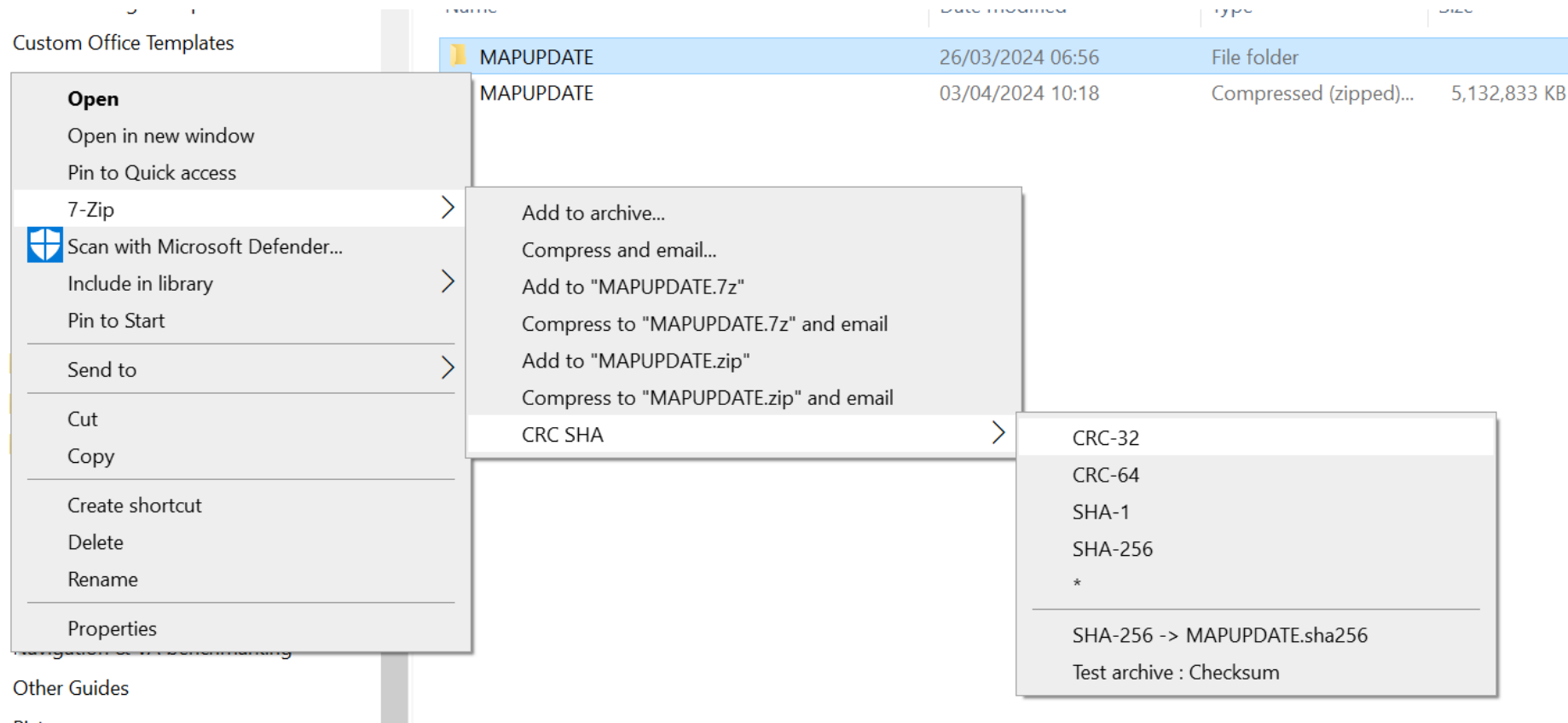
Name	Date modified	Type	Size
MAPUPDATE	26/03/2024 06:56	File folder	
MAPUPDATE	03/04/2024 10:18	Compressed (zipped)...	5,132,833 KB

Navigation pane:

- Quick access
- OneDrive - Toyota Motor Europe
- This PC
- USB Drive (D:)
  - MAPUPDATE
  - MAPUPDATE
- Network

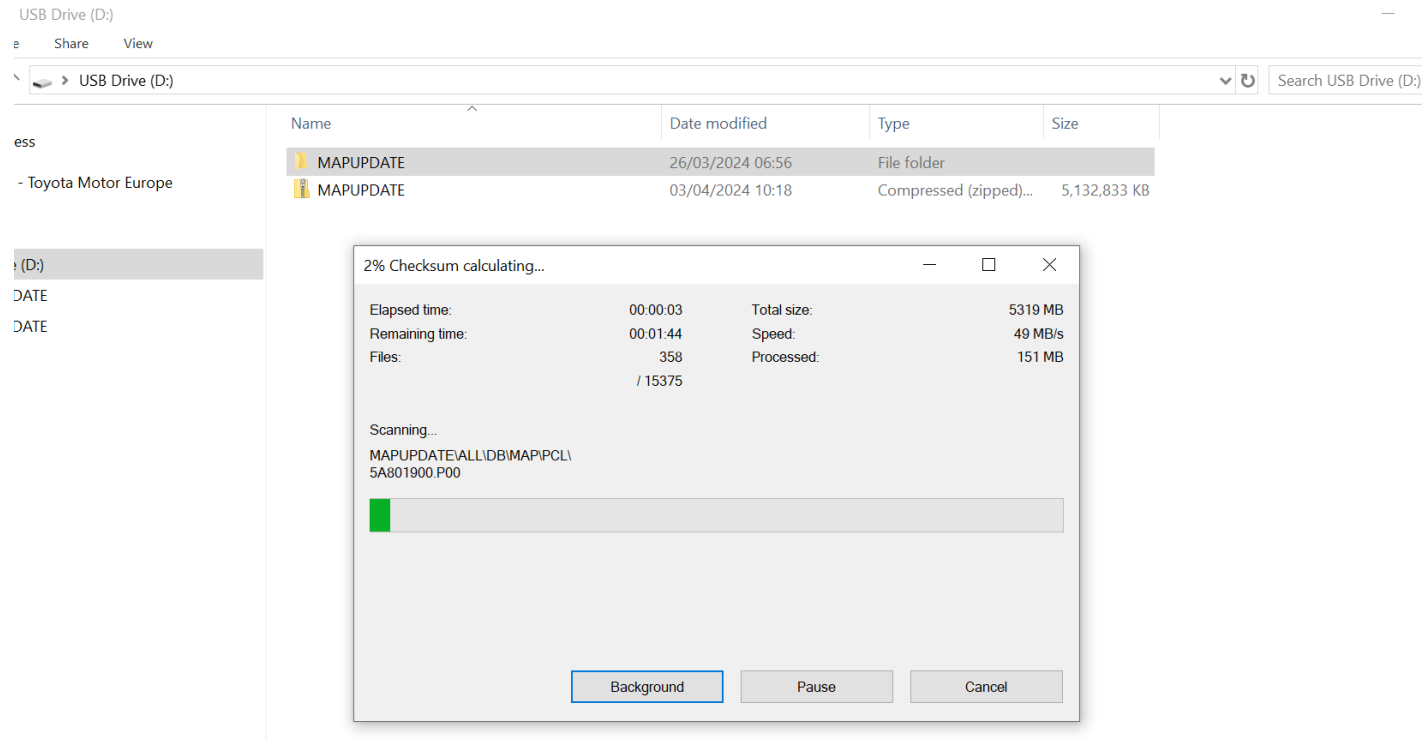
## Step 1.1: Perform Checksum analysis

1. Right click on the unzipped "MAPUPDATE" folder and select the 7-zip options panel
2. Select CRC SHA
3. Click on the CRC-32 option, this will trigger the Checksum



## Step 1.2: Perform Checksum analysis

Wait until the Checksum is performed.




*Be aware that this process can take several minutes and up to hours, depending on the size of the map package*

## Step 2: Check results

When the Checksum is completed, we will be able to compare the results data with the checksum provided by Toyota:

Checksum information

Folders	6
Files	15375
Size	5577584276 bytes (5319 MiB)
CRC32 checksum for data	4E531763-00001DF1
CRC32 checksum for data and names	78B1467F-00001E0C



```

Folders: 6
Files: 15375
Size: 5577584276 bytes (5319 MiB)
CRC32 checksum for data: 4E531763-00001DF1
CRC32 checksum for data and names: 78B1467F-00001E0C
CRC64 checksum for data: 2A48053C569B62F4-00001E0F
CRC64 checksum for data and names: DC43E06F5086750E-00001DE5
SHA256 checksum for data: 7c2d19a1e820bacc0a3d3639f0a6f3861a20478a4ef6a67c0cb843e99cb79d2a-00001DE3
SHA256 checksum for data and names: c3e53bf8c2ce5c0cfff6d15b6065356d599e1dfcdbfa49628e4f8705fa8ce7ab-00001E42
SHA1 checksum for data: ee6907b873f91da1d88f30f8dae238736f05f958-00001E18
SHA1 checksum for data and names: 91aa79c4a457081c0343e140e37d2c12f6c1741c-00001E00
BLAKE2sp checksum for data: 1a0d731e73a5d4cc843b5f72f8e4ac669ca1b40646e05be6fa5e35172de7e6a0-00001E29
BLAKE2sp checksum for data and names: 783c374be9d4d913a290fcb187598dab3e2ad96c114b2ee52464eb6cee06a1cc-00001DF1
  
```

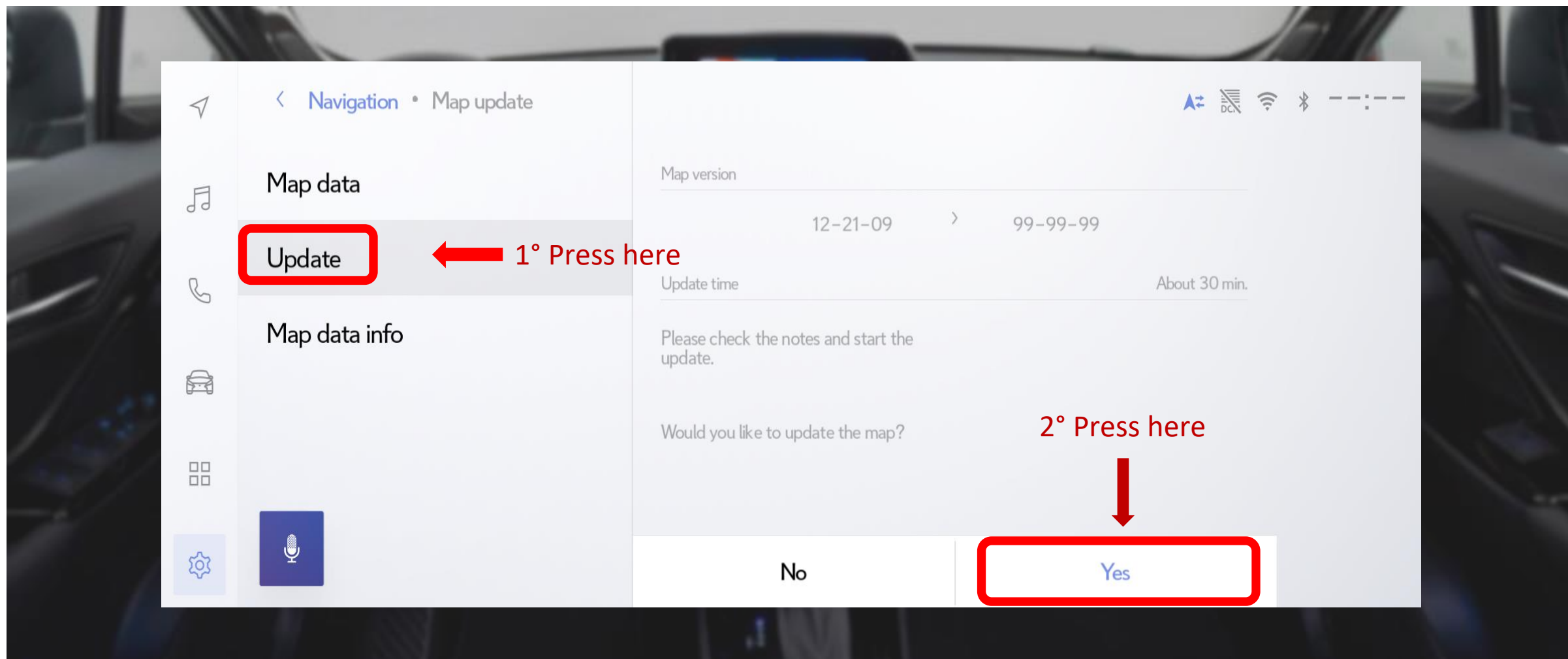
OK Cancel

\*If the data does not match, it means that our map package is incorrect or corrupted, and the user will have to download and extract the package again

By checking that the data in the “CRC32 checksum for data” row matches in the checksum and the .txt document provided, is enough to verify that our file contains the correct data\*

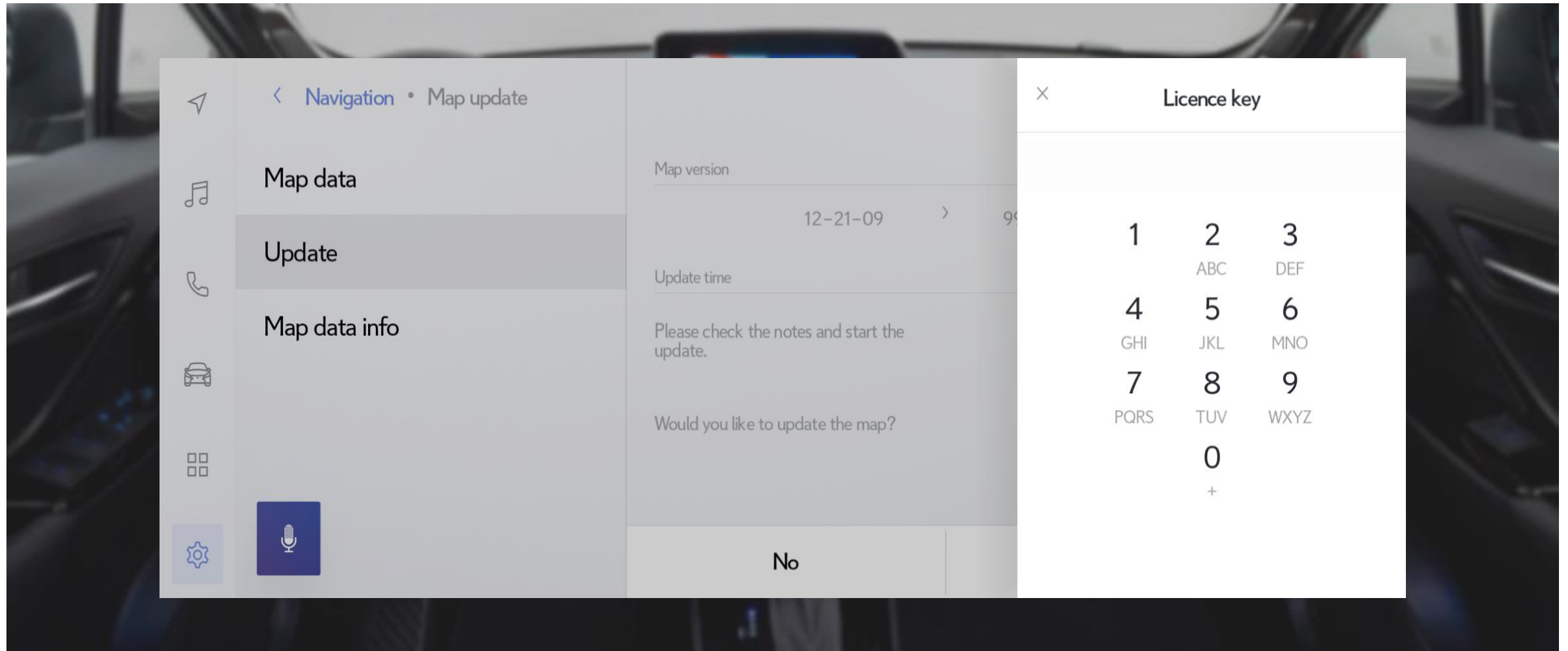
Context to insert License key:

First Plug in USB key with data unzipped!



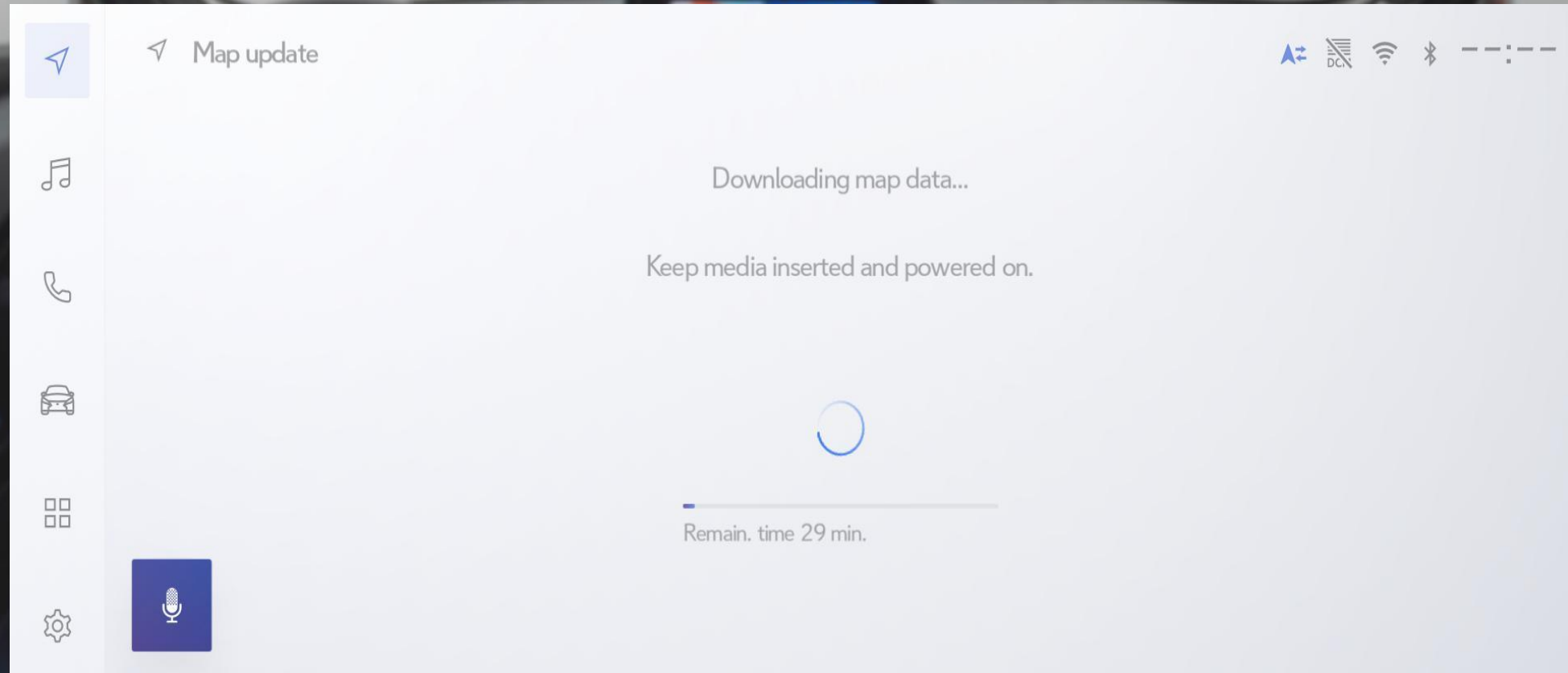
Review the journey from step 1 to 3, you will get with this interface and pressing update the MM21  
Request the permission to update the map.

# Input the License key:



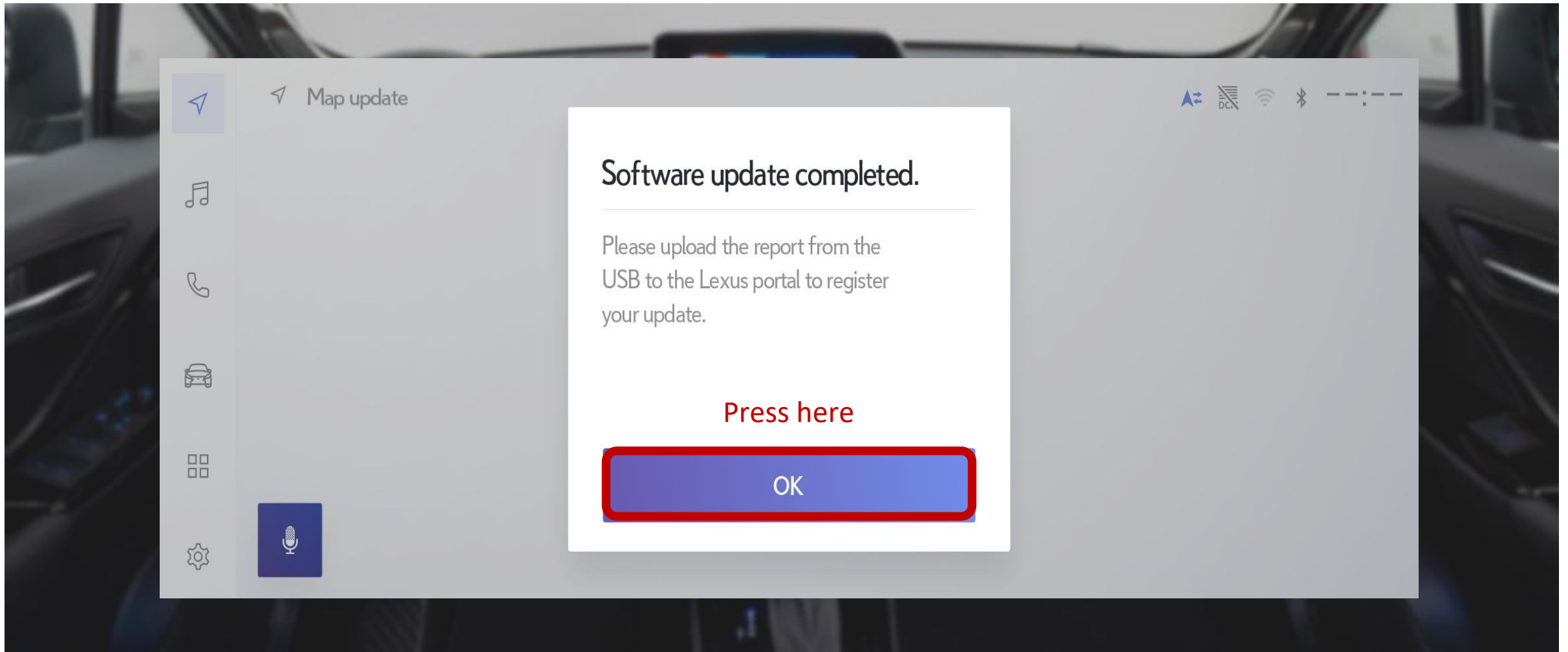
# Downloading data:

System will request turning off MM unit to start the update

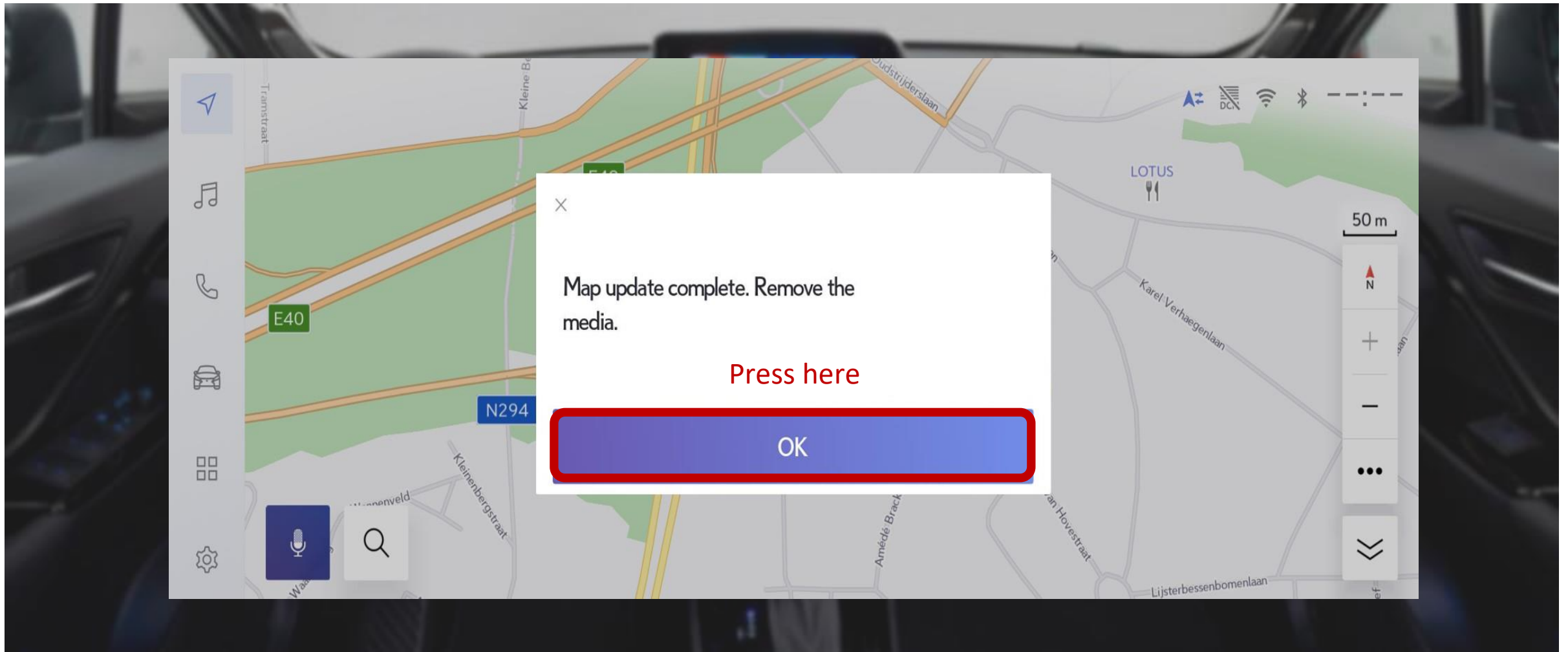


The following screen will be displayed on the way, so click OK. Do not disconnect the USB until the map update is complete.

# Update completed:



## Map Update Finalized:

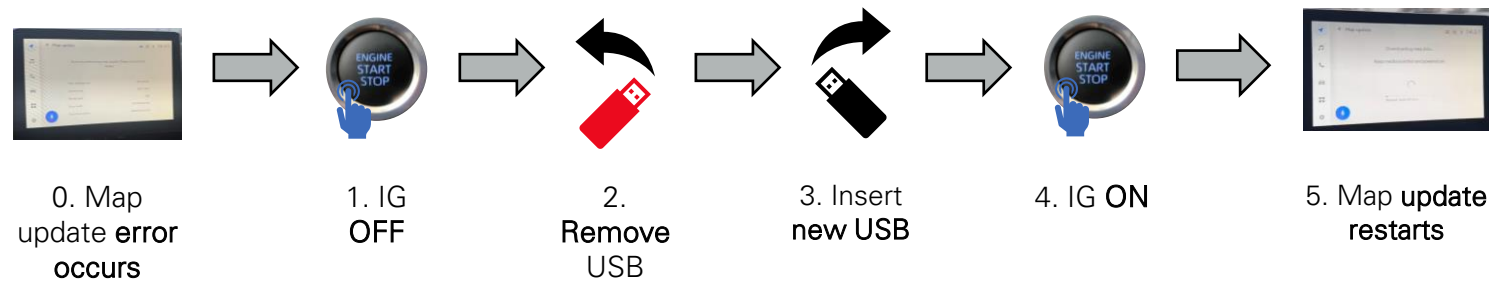


After updating the map, press OK to remove the USB memory and complete.

# RECOMMENDED PROCEDURE WHEN AN ERROR OCCURS DURING MAP UPDATE

In case an error occurs during a MM21 map update, please follow the following steps:

0. "Error occurred during map update. Please contact your dealer." message appears on the multimedia screen.
1. Turn IG OFF. ⚠️
2. Remove current inserted USB stick from USB port.
3. Download again the map package and add it to a new USB. Confirm checksum is OK. Insert the new USB stick in the USB port.
4. Turn IG ON.
5. Map update restarts



## Notes

- ⚠️ USB device must not be disconnected while the map update process is ongoing or when the vehicle is turned ON. The USB replacement must only be performed after the error screen appears and vehicle is turned OFF, strictly following the recommended procedure.
- When retrying map update with correct USB after an error occurred, please be aware that map update can take longer than usual (>1h).
- To reduce the possibility of data corruption in the USB, please make sure you eject USB device safely from your PC after downloading map update package into the USB stick.